



Utility Grounding

DIVISION





92 Years of Manufacturing Heritage in the USA...

Founded in 1922 by Paul N. Travis, Travis Pattern and Foundry began as a small business producing patterns for sand casting. As the company grew, nonferrous foundry operations were added and industrial castings became a major part of the business.

The company experienced significant growth in the 1970's when it began producing a proprietary line of irrigation products. Self propelled irrigation systems were developed; then, as the product lines grew, casting operations increased and steel forming and galvanizing capabilities were added.

From the mid 1980's until the present, nonferrous casting operations have increased and more diverse product lines have been added. The acquisition of Product Design Unlimited in 1992 gave us the ability to provide a full range of substation connectors. This led to the deployment of Travis Utility Grounding Division (UGD).

Travis Pattern and Foundry has experienced immense changes during its 92 years of business. Travis supplies an extensive range of products to a growing number of customers all over the world. Our facility has prevailed among the most modern anywhere. We continue to update our production equipment to keep up with new technology and provide the highest quality products available.

Terms and conditions of sale

Prices and Terms of Payment

Quotations are firm when accepted within 30 days. Payment terms are net 30 days from date of invoice.

Transportation of Shipments

All prices are F.O.B. shipping point.

Packaging

Utility Ground Equipment reserves the right to ship in standard packaging. All export or special types of packaging are subject to additional charges.

Sales Tax

Prices do not include sales, use, excise or similar taxes. The Company reserves the right to add the net selling price to the amount of such tax as may be required by law.

Limitation of Liability

The Company's liability on any claim of any kind, including negligence, for any loss or damage resulting from a contract, from the manufacture, sale, resale, delivery, repair or use of our equipment furnished on a contract shall in no case exceed the price invoiced on the order. In no event shall the Company be liable for special or consequential damage.

Guarantee

Utility Ground Equipment warrants that its manufactured products will be free from defects in material, workmanship, and title. If it appears within one year from date of shipment that the product does not meet the warranty specified under normal and proper use of the product, it will be repaired or replaced at the company's expense F.O.B. factory.



Table of Contents:

Grounding Clamps

<i>i.</i>	<i>C-Clamp</i>
<i>ii.</i>	<i>Ball Socket</i>
<i>iii.</i>	<i>Flat Clamp</i>
<i>iv.</i>	<i>Duck Bill</i>
<i>v.</i>	<i>IWCB</i>
<i>vi.</i>	<i>DLJ Tool</i>
<i>vii.</i>	<i>AngleClamp</i>
<i>viii.</i>	<i>Grounding Studs</i>
<i>ix.</i>	<i>Cluster Bar</i>
<i>x.</i>	<i>Breakaway</i>





Grounding Clamps

3/4" AL-BR C-CLAMP THREADED 15 deg

- 400A continuous current rating.
- Stainless Steel 5/8-11 threaded eye screw - tested at 400 lbs-in.
- Aluminum Casting 356-T6 or 115 Red Brass



PART NUMBER	DESCRIPTION	SERRATED	MAIN LINE		CONDUCTOR CABLE OR BUS DIA. RANGE	MAX CURRENT FAULT RATING		LBS
			Min	Max				
TP75ACAT15	3/4" AL C-CLAMP (SMOOTH) THREADED 15 DEG	NO	#6 SOLID	397.5 ACSR 18/1	0.125-.75	5H	47 kA @ 15 Cycles X/R 30	1
TP75BCBT15	3/4" BR C-CLAMP (SERRATED) THREADED 15 DEG	NO	#6 SOLID	397.5 ACSR 18/1	0.125-.75	5H	47 kA @ 15 Cycles X/R 30	1



1 1/4" AL C-CLAMP THREADED 15 deg

- 400A continuous current rating.
- Stainless Steel 5/8-11 threaded eye screw - tested at 400 lbs-in.
- Aluminum Casting 356-T6.

PART NUMBER	DESCRIPTION	SERRATED	MAIN LINE		CONDUCTOR CABLE OR BUS DIA. RANGE	MAX CURRENT FAULT RATING		LBS
			Min	Max				
TP125ACAT15	1-1/4" AL C-CLAMP (SMOOTH) THREADED 15 DEG	NO	#6 SOLID	1,033.5 MCM ACSR 54/7	0.125-1.25	5H	47 kA @ 15 Cycles X/R 30	1.5
TP125ACBT15	1-1/4" AL C-CLAMP (SERRATED) THREADED 15 DEG	YES	#6 SOLID	1,033.5 MCM ACSR 54/7	0.125-1.25	5H	47 kA @ 15 Cycles X/R 30	1.5



1 1/2" AL C-CLAMP **THREADED 15 deg**

- 400A continuous current rating.
- Stainless Steel 5/8-11 threaded eye screw - tested at 400 lbs-in.
- Aluminum Casting 356-T6.



PART NUMBER	DESCRIPTION	SERRATED	MAIN LINE		CONDUCTOR CABLE OR BUS DIA. RANGE	MAX CURRENT FAULT RATING		LBS
			Min	Max				
TP15ACAT15	1-1/2" AL C-CLAMP (SMOOTH) THREADED 15 DEG	NO	#6 SOLID	1.5" Dia Cable or Bus	0.125-1.5	5H	47 kA @ 15 Cycles X/R 30	1.5
TP15ACBT15	1-1/2" AL C-CLAMP (SERRATED) THREADED 15 DEG	YES	#6 SOLID	1.5" Dia Cable or Bus	0.125-1.5	5H	47 kA @ 15 Cycles X/R 30	1.5

2" AL C-CLAMP **PLUG/PIN**

- 400A continuous current rating.
- Stainless Steel 3/4-10 threaded eye screw tested at 400 lbs-in.
- Aluminum Casting 356-T6.
- Strain relief comes standard.



PART NUMBER	DESCRIPTION	SERRATED	MAIN LINE		CONDUCTOR CABLE OR BUS DIA. RANGE	MAX CURRENT FAULT RATING		LBS
			Min	Max				
TP2ACAPSR	2" AL C-CLAMP (SMOOTH) PLUG/ PIN ADAPTER WITH STRAIN RELIEF (SST ACME)	NO	#6 SOLID	2" Dia Cable or Bus	0.125-2.0	Grade 5	43 kA @ 15 Cycles Symmetrical	2.65
TP2ACBPSR	2" AL C-CLAMP (SERRATED) PLUG/ PIN ADAPTER WITH STRAIN RELIEF (SST ACME)	YES	#6 SOLID	2" Dia Cable or Bus	0.125-2.0	Grade 5	43 kA @ 15 Cycles Symmetrical	2.65

MADE IN THE USA

Grounding Clamps

2" AL C-CLAMP THREADED 15 deg

- 400A continuous current rating
- Stainless Steel 3/4-10 threaded eye screw - tested at 400 lbs-in
- Aluminum Casting 356-T6



PART NUMBER	DESCRIPTION	SERRATED	MAIN LINE		CONDUCTOR CABLE OR BUS DIA. RANGE	MAX CURRENT FAULT RATING		LBS
			Min	Max				
TP2ACAT15	2" AL C-CLAMP (SMOOTH) THREADED 15 DEG	NO	#6 SOLID	2" Dia Cable or Bus	0.125-2.0	5H	47 kA @ 15 Cycles X/R 30	2.5
TP2ACBT15	2" AL C-CLAMP (SERRATED) THREADED 15 DEG	YES	#6 SOLID	2" Dia Cable or Bus	0.125-2.0	5H	47 kA @ 15 Cycles X/R 30	2.5

2" AL C-CLAMP THREADED 5H

- 400A continuous current rating.
- Stainless Steel 3/4-10 threaded eye screw - tested at 400 lbs-in.
- Aluminum Casting 356-T6.
- Strain relief comes standard.



PART NUMBER	DESCRIPTION	SERRATED	MAIN LINE		CONDUCTOR CABLE OR BUS DIA. RANGE	MAX CURRENT FAULT RATING		LBS
			Min	Max				
TP2ACATSR-5H	2" AL C-CLAMP (SMOOTH) THREADED WITH STRAIN RELIEF, 5H(5/8"-11)	NO	#6 SOLID	2" Dia Cable or Bus	0.125-2.0	5H	47 kA @ 15 Cycles X/R 30	3.15
TP2ACBTSR-5H	2" AL C-CLAMP (SERRATED) THREADED WITH STRAIN RELIEF, 5H(5/8"-11)	YES	#6 SOLID	2" Dia Cable or Bus	0.125-2.0	5H	47 kA @ 15 Cycles X/R 30	3.15

MADE IN THE USA



2" AL C-CLAMP THREADED 7H

- 400A continuous current rating.
- Stainless Steel 3/4-10 threaded eye screw - tested at 400 lbs-in.
- Aluminum Casting 356-T6.
- Strain relief comes standard.



PART NUMBER	DESCRIPTION	SERRATED	MAIN LINE		CONDUCTOR CABLE OR BUS DIA. RANGE	MAX CURRENT FAULT RATING		LBS
			Min	Max				
TP2ACATSR-7H	2" AL C-CLAMP (SMOOTH) THREADED WITH STRAIN RELIEF, 7H(3/4"-10)	NO	#6 SOLID	2" Dia Cable or Bus	0.125-2.0	7H	68 kA @ 15 Cycles X/R 30	3.15
TP2ACBTSR-7H	2" AL C-CLAMP (SERRATED) THREADED WITH STRAIN RELIEF, 7H(3/4"-10)	YES	#6 SOLID	2" Dia Cable or Bus	0.125-2.0	7H	68 kA @ 15 Cycles X/R 30	3.15



2.5" AL C-CLAMP THREADED 20 deg

- 600A continuous current rating.
- Stainless Steel 3/4-10 threaded eye screw - tested at 400 lbs-in.
- Aluminum Casting 356-T6.

PART NUMBER	DESCRIPTION	SERRATED	MAIN LINE		CONDUCTOR CABLE OR BUS DIA. RANGE	MAX CURRENT FAULT RATING		LBS
			Min	Max				
TP25ACAT20	2" AL C-CLAMP (SMOOTH) THREADED 20 DEG	NO	#6 SOLID	2.5" Dia Cable or Bus	0.125-2.5	5H	47 kA @ 15 Cycles X/R 30	3.5

Grounding Clamps

3.5" AL C-CLAMP **THREADED 15 deg**

- 400A continuous current rating.
- Stainless Steel 3/4-10 threaded eye screw - tested at 400 lbs-in.
- Aluminum Casting 356-T6.
- Strain relief comes standard.



PART NUMBER	DESCRIPTION	SERRATED	MAIN LINE		CONDUCTOR CABLE OR BUS DIA. RANGE	MAX CURRENT FAULT RATING	LBS
			Min	Max			
TP35ACAT15-SR	1-35" C-CLAMP (SMOOTH) THREADED 15 DEG STRAIN RELIEF	NO	#4 ACSR	3" Dia Cable or Bus	0.25-3.5	5H 47 kA @ 15 Cycles X/R 30	4.75
TP35ACBT15-SR	1-35" C-CLAMP (SERRATED) THREADED 15 DEG STRAIN RELIEF	YES	#4 ACSR	3" Dia Cable or Bus	0.25-3.5	5H 47 kA @ 15 Cycles X/R 30	4.75



6" AL C-CLAMP **ROUND BUS**

- 800A continuous current rating W/ dual grounds.
- Stainless Steel 3/4-10 threaded eye screw - tested at 400 lbs-in.
- Aluminum Casting 356-T6.
- 1 1/2" X 6" long solid grounding stud.
- Lifting ring.



PART NUMBER	DESCRIPTION	SERRATED	MAIN LINE IPS		CONDUCTOR CABLE OR BUS DIA. RANGE	MAX CURRENT FAULT RATING		LBS
			Min	Max				
TP6ARA2T20-S	6" ALUMINUM ROUND BAR CLAMP (SMOOTH) (2 X THREADED) 20 DEGREES W 1 1/2" GROUNDING STUD	NO	3"	5"	3.5"-6"	6H	63 kA @ 15 Cycles X/R 30	4
TP6ARB2T20-S	6" ALUMINUM ROUND BAR CLAMP (SERRATED) (2XTHREADED) 20 DEGREES W 1 1/2" GROUNDING STD.	YES	3"	5"	3.5"-6"	6H	63 kA @ 15 Cycles X/R 30	4
TP6ARA2T20-S-ET	6" AL ROUND BAR, SQUARE, AND "T" CLAMP(2XTHREADED) 20 DEG W 1 1/2" GROUNDING STUD	NO	3"	5"	3.5"-6"	6H	63 kA @ 15 Cycles X/R 30	4

MADE IN THE USA



Grounding clamps

1" BALL SOCKET CLAMP **THREADED 15 deg**



- 400A continuous current rating.
- Stainless Steel 5/8-11 threaded eye screw - tested at 400 lbs-in.
- Aluminum Casting 356-T6.

1" BALL SOCKET CLAMP



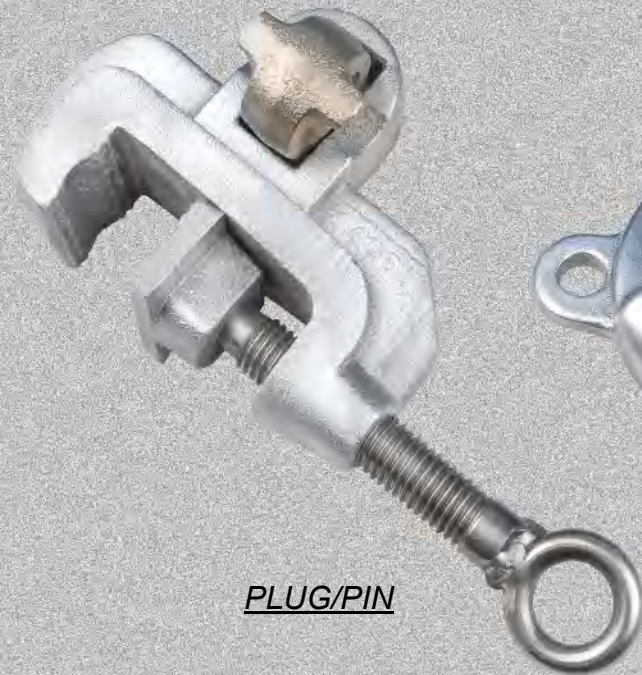
- 400A continuous current rating.
- Stainless Steel 5/8-11 threaded eye screw - tested at 400 lbs-in.
- #878 Si Bronze

PART NUMBER	DESCRIPTION	MATERIAL	BALL SIZE	STUD SIZE	MAX CURRENT FAULT RATING		LBS
					5H	47 kA @ 15 Cycles X/R 30	
BSC1A	1" BALL SOCKET CLAMP	BRONZE	1"	5/8"	5H	47 kA @ 15 Cycles X/R 30	1.88
TP15ABSC1T15	AI 1 1/2" C-CLAMP 1" BALL SOCKET THREADED 15 DEG.	ALUMINUM	1"	3/4"	5H	47 kA @ 15 Cycles X/R 30	1.63



1.5" Flat Clamps

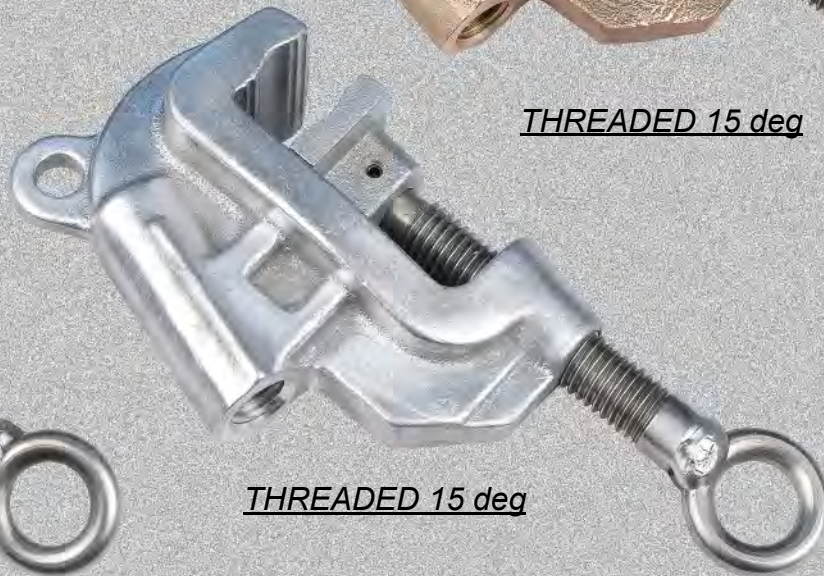
- 400A continuous current rating.
- Stainless Steel 5/8-11 threaded eye screw - tested at 400 lbs-in.
- Available in both Aluminum 356-T6 and Red Brass 115.



PLUG/PIN



THREADED 15 deg



THREADED 15 deg

PART NUMBER	DESCRIPTION	SERRATED	MATERIAL	FLAT BUS BAR RANGE	MAX CURRENT FAULT RATING		LBS
TP15AFBP	TRAVIS PATTERN 1.5" ALUMINUM FLAT BAR CLAMP (SERRATED) (PLUG ADAPTER)	YES	ALUMINUM	0-1.5"	5	43 kA @ 15 Cycles Symmetrical	1.63
TP15BFBP	TRAVIS PATTERN 1.5" BRONZE FLAT BAR CLAMP (SERRATED) (PLUG ADAPTER)	YES	BRONZE	0-1.5"	5	43 kA @ 15 Cycles Symmetrical	4.00
TP15AFBT15	TRAVIS PATTERN 1.5" ALUMINUM FLAT BAR CLAMP, (SERRATED) (THREADED) 15 DEGREE	YES	ALUMINUM	0-1.5"	5	43 kA @ 15 Cycles Symmetrical	2.13
TP15BFBT15	TRAVIS PATTERN 1.5" BRONZE FLAT BAR CLAMP, (SERRATED) (THREADED) 15 DEGREE	YES	BRONZE	0-1.5"	5H	47 kA @ 15 Cycles X/R 30	5.13



Grounding clamps

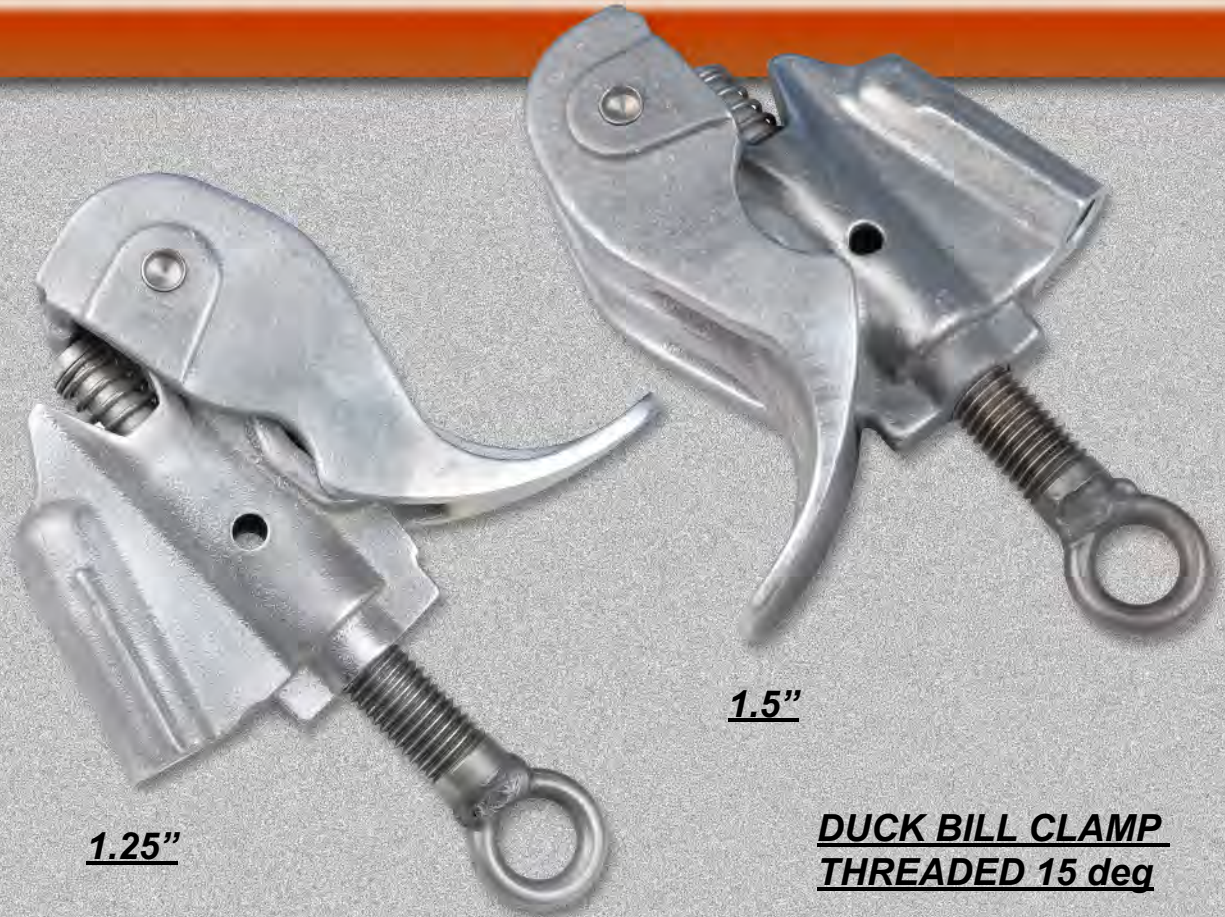
4"-6" IWCB

DOUBLE THREADED 15 deg

- 800A continuous current rating.
- Stainless Steel 1"-8 threaded eye screw - tested at 400 lbs-in.
- 1-1/2"x6" long ground stud.
- Aluminum Casting 356-T6.
- Serrated surface on both body and jaw.



PART NUMBER	DESCRIPTION	SERRATED	MAIN LINE		MAX CURRENT	FAULT RATING	LBS
			MIN	MAX			
TPIWCB4X6BT15GS	4" to 6" AL IWCB (SERRATED) DOUBLE THREADED to (1) 1.5" x 6" STUD	YES	4"	6"	7H	68kA @ 15 Cycles X/R 30	5.0



DUCK BILL CLAMP
THREADED 15 deg

- 400A continuous current rating.
- Stainless Steel 3/4-10 threaded eye screw - tested at 400 lbs-in.
- Aluminum Casting 356-T6.

PART NUMBER	DESCRIPTION	SERRATED	MAIN LINE		CONDUCTOR CABLE OR BUS DIA. RANGE	MAX CURRANT FAULT RATING		LBS
			Min	Max				
TP125ADAT15	1-1/4" AL DUCKBILL (SMOOTH) THREADED 15 DEG	NO	#6 SOLID	1,033.5 MCM ACSR 54/7	0.125-1.25	5H	47 kA @ 15 Cycles X/R 30	2
TP125ADBT15	1-1/4" AL DUCKBILL (SERRATED) THREADED 15 DEG	YES	#6 SOLID	1,033.5 MCM ACSR 54/7	0.125-1.25	5H	47 kA @ 15 Cycles X/R 30	2
TP15ADAT15	1-1/2" AL DUCKBILL (SMOOTH) THREADED 15 DEG	NO	#6 SOLID	1.5" Dia Cable or Bus	0.125-1.5	5H	47 kA @ 15 Cycles X/R 30	2.25
TP15ADBT15	1-1/2" AL DUCKBILL (SERRATED) THREADED 15 DEG	YES	#6 SOLID	1.5" Dia Cable or Bus	0.125-1.5	5H	47 kA @ 15 Cycles X/R 30	2.25



Grounding clamps

ANGLE CLAMP

- 400A continuous current rating.
- Stainless Steel 3/4-10 threaded eye screw - tested at 400 lbs-in.
- Aluminum Casting 356-T6.
- Strain relief comes standard.



Overbite



Underbite

PART NUMBER	DESCRIPTION	CONDUCTOR BUS RANGE	MAX CURRENT FAULT RATING		LBS
TP6X6ACAT15O-SR	AL 6X6 ALUMINU C-CLAMP 5/8-11 15 DEG THRD OVERBITE STRAIN RELIEF (LIP ON BODY)	2"-6" ANGLE	5H	47 kA @ 15 Cycles X/R 30	3.5
TP6X6ACAT15U-SR	AL 6X6 ALUMINU C-CLAMP 5/8-11 15 DEG THRD UNDERBITE STRAIN RELIEF (LIP ON JAW)	2"-6" ANGLE	5H	47 kA @ 15 Cycles X/R 30	3.5



DLJ TOOL

DLJ Tool Features

- Assist tying in connectors
- Securing fuse barrels
- Easy ring attachment
- Raising wires or cables
- Available with high visibility powder coating
- Made from light weight heat treated aluminum

“Designed for fuse barrels switches and more”



DLJ1



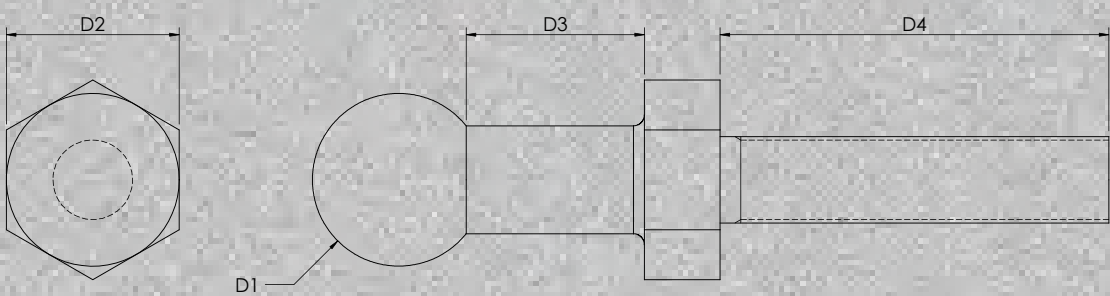
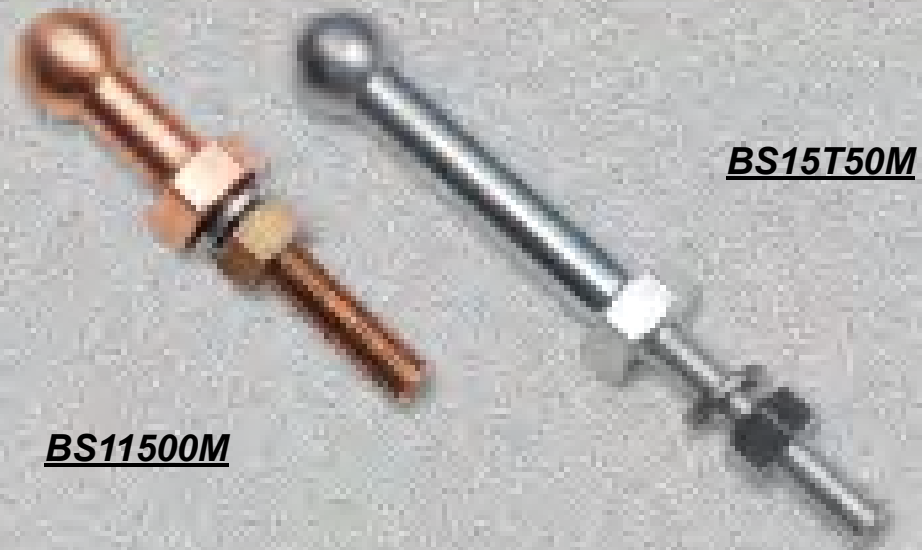
DLJ1-P



Grounding Studs

Grounding Ball Studs

- 400A continuous current rating.
- Copper alloy C-110.
- For electric tin plating use suffix (ETP).

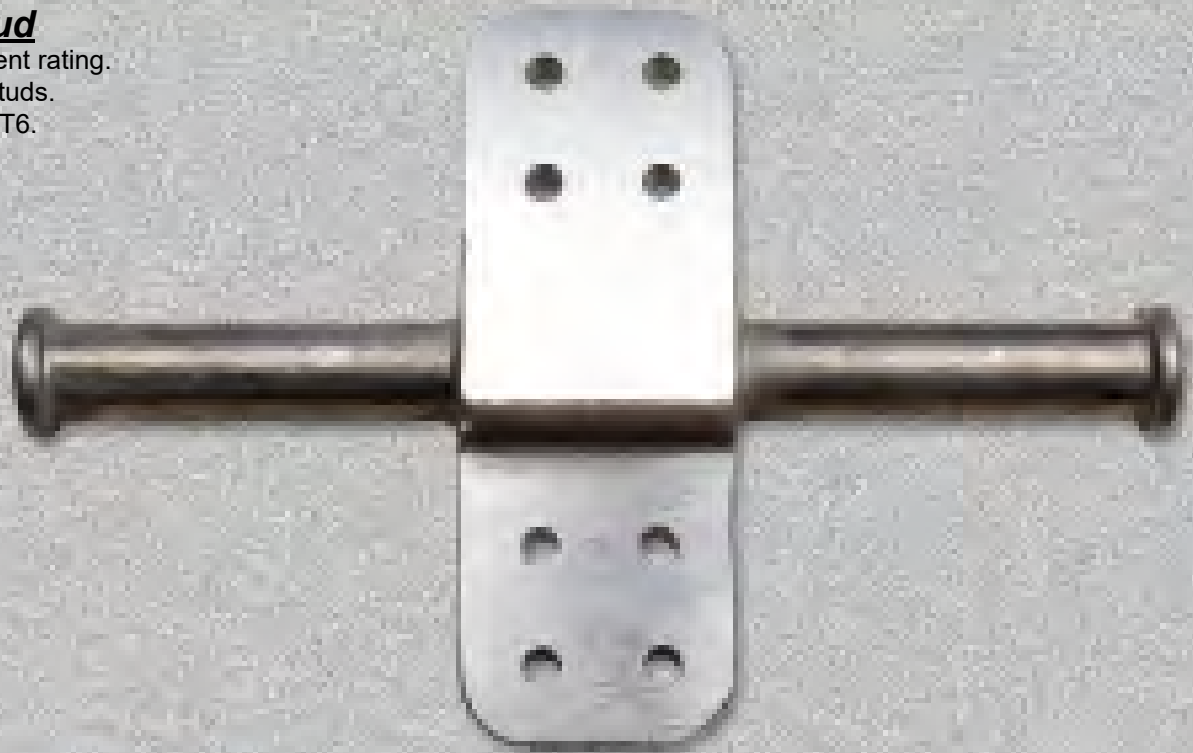


PART NUMBER	DESCRIPTION	SINGLE CONFIGURATIONS		D1	D2	D3	D4	THREAD		
		MAX CURRENT	FAULT RATING						MAX CURRENT	FAULT RATING
BS11500M	Ball Stud, 1 IN Ball, 1 IN Shank, 1/2 IN-13 Male Thread	47 kA @ 15 Cycles	X/R 30	63kA @ 15 Cycles	X/R 30	1"	1"	1"	2.25"	1/2"-13
BS13500M	Ball Stud, 1 IN Ball, 3 IN Shank, 1/2-13 Male Thread	47 kA @ 15 Cycles	X/R 30	63kA @ 15 Cycles	X/R 30	1"	1"	3"	2.25"	1/2"-13
BS15500M	Ball Stud, 1 IN Ball, 5 IN Shank, 1/2 IN-13 Male Thread	47 kA @ 15 Cycles	X/R 30	63kA @ 15 Cycles	X/R 30	1"	1"	5 1/2"	2.25"	1/2"-13



Special Double Stud

- 3000 A continuous current rating.
- 1-1/2"x6" long ground studs.
- Aluminum Casting 356-T6.



Special Single Stud

- 3000A continuous current rating.
- 1-1/2"x6" long ground studs.
- Aluminum Casting 356-T6.

PART NUMBER	DESCRIPTION	MAX CURRENT FAULT RATING	LBS
EXTENSION PAD			
4X4-EXT-2GS	ALUMINUM (2) 4X4 PADS EXTENSION W/ (2) 1 1/2" X 6" DIA GROUNDING STUDS.	68kA @ 15 Cycles X/R 30	7 LBS
PAD TO STUD			
4X4-1GSF-15	ALUMINUM 4X4 PAD TO 1 1/2" X 6" DIA FLAG STYLE GROUND STUD.	68kA @ 15 Cycles X/R 30	3 LBS



CLUSTER BAR

TEMPORARY POLE MOUNT

CLUSTER BAR

- 400A continuous current rating.
- Aluminum Casting 356-T6.



The Travis UGD Temporary Pole Mount Cluster Bar is design to be permanently installed on the power pole and allows definite pole penetration. The rack is easy to use when conduit or other obstructions are on the pole. This rack provides a location for multiple grounding clamps to join, as well as an equal potential zone for the worker on the pole.

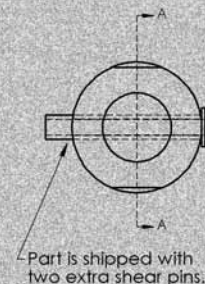
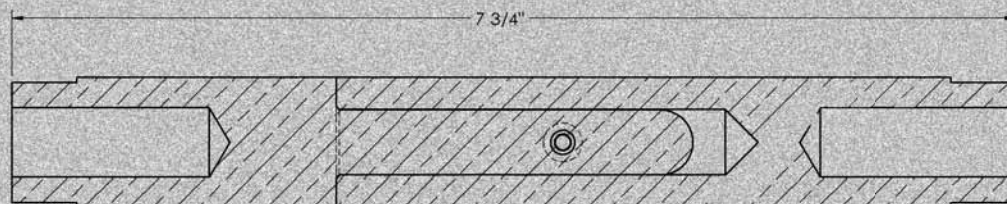
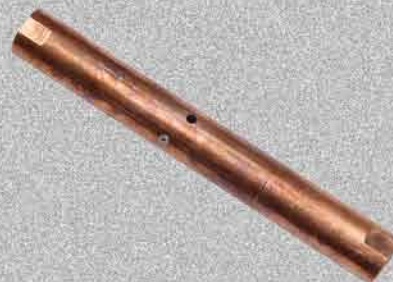
PART NUMBER	DESCRIPTION		MAX CURRENT FAULT RATING	LBS
CPB-DE	ALUMINUM GROUNDING JUNCTION RACK.		CLASS 5 43 kA @ 15 Cycles Symmetrical	2

BREAKAWAY

BAC (BREAKAWAY CONNECTOR)

- 400A continuous current rating.
- Copper C-110

The Break Away Connector (BAC) creates an equal potential bond for electrical workers operating out of a man lift or any machine that doesn't have an insulation boom. In the event an electrical worker becomes incapacitated, the hydraulic lift can be lowered manually performing an aerial rescue. In these cases the BAC will break away, freeing the boom from the conductor in which it was attached.



PART NUMBER	DESCRIPTION	MATERIAL	TAP SIZE	MAX CURRENT	FAULT RATING	LBS
BAC625(300)	CABLE BREAK-AWAY CONNECTOR 5/8-11 THREAD (250-300LBS (BONDING CABLE ONLY) (NOT TO BE USED FOR GROUNDING)	C-110	5/8-11	CLASS 1	10 KA @ 10 Cycles	1.5
BAC625(600)	CABLE BREAK-AWAY CONNECTOR 5/8-11 THREAD (550-600LB)(BONDING CABLE ONLY) (NOT TO BE USED FOR GROUNDING)	C-110	5/8-11	CLASS 1	10 KA @ 10 Cycles	1.5

Manufactured By



PATTERN & FOUNDRY, INC.

C-CLAMPS

BALL SOCKETS

FLAT CLAMPS

DUCKBILLS

IWCB

DLJ TOOL

ANGLE CLAMPS

GROUNDING STUDS

CLUSTER BAR

BREAKAWAY

1413 E HAWTHORNE ROAD, SPOKANE, WA 99218

PHONE: (509) 466-3545 • FAX: (509) 467-6465