



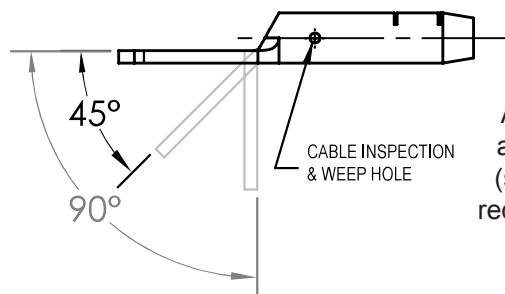
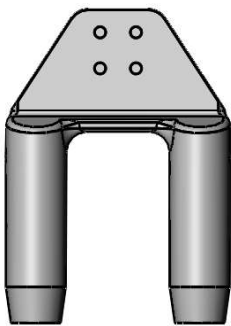
PATTON & COOKE Single Crimp Terminal (A1C) Connectors



Patton & Cooke is proud to offer a line of Travis Pattern exclusive high strength aluminum Single Crimp Terminal (A1C) connectors for your substation needs. Single Crimp connectors are an optimal choice for a quick, safe and reliable connection. The connection is made without the need for expensive install tools or welding, thus reducing install time and eliminating hazards from welding (gases, chemicals, and molten metals).

TIME SAVER
MONEY SAVER
NO EXPENSIVE TOOLS NEEDED
COMPLETE CONNECTION IN MINUTES

Available as double cable to flat pad or as single cable to flat pad



Available in different angles – side formed (standard), angled as required, 90°, centered.

The A1C aluminum compression terminals for connecting aluminum cable to a flat pad utilizes a standard hex die and can be installed with a single crimp. The crimping die sizes are clearly marked for ease of installation.

FEATURES	BENEFITS
• High strength aluminum connectors	• Safer - no hazards from welding
• Crimp die sizes clearly marked for ease of installation	• Faster - connection can be completed in minutes
• Manufactured to NEMA CC1 standards	• Consistent repeatable connections
• Lightweight	• Install in any weather - rain, snow, sleet, wind
• High conductivity, corrosion resistant	• Verified connections with inspection hole
• Superior mechanical, thermal and electrical connection compared to welded/bolted connectors	• Reduced project costs from time saved - no need for welding



PATTERN & FOUNDARY

