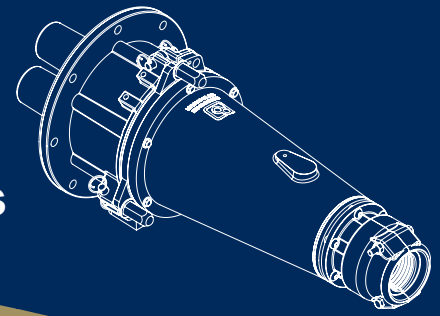




# PATTON & COOKE

## 6.6/11kV, 500 Amp

### Shore Power Cruise Ship Cable Couplers



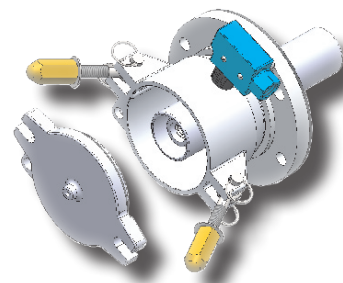
Patton & Cooke shore power cable couplers provide ships to clean, hydroelectrically generated shore power. These couplers were designed for fast and safe installation by single crew or shore personnel. Its compact, durable construction is built to last in harsh marine conditions.

#### PRODUCT FEATURES & BENEFITS

- **Quick Coupler System:** Helps minimize downtime caused by damaged cables by enabling fast changeout of equipment or access to auxiliary power supplies.
- **Marine Grade Construction:** Heat treated aluminum castings, stainless steel hardware, hypalon gaskets, heavy-duty polyester powder coating.
- **Fiber Optic Capabilities:** Available with provision for managing cables with integrated fiber optic bundle.
- Provisions for padlocking or key interlock mounting
- Front end serviceable contacts for easier service
- Self-aligning housing for rapid coupling/uncoupling
- Ground check pilot system protection
- Solder type or solderless conductor stems (for <8kV)
- Secure three bolt, quick flip connection (for <8kV)

#### PRODUCT OPTIONS

- Available as a cable mount or equipment mount
- Durable, powder coat finish only available in blue.
- Optional "Key Interlock" system is an additional optional feature in the 15 kV system that prevents coupler disconnection, without prior switch house lock out.
- Shorting caps & Live end covers available
- Rotated phases



**High Voltage Equipment Solutions. Design and Manufacturing.**

## PRODUCT SPECIFICATIONS

|  |  |
|--|--|
| Maximum Voltage 15 kV; Maximum Amperage 500A | 6 Hour Dry Withstand(AC): 35kV   |
| 1 Minute Dry Withstand (AC): 55kV            | 15 Minutes Dry Withstand (AC): 75kV  |
| Basic Impulse Level (BIL): 95kV              | Short Circuit Fault Levels: 41.2 kA RMS  |
| Stainless Steel Hardware                     | Corona extinction voltage (BIL): 13kV  |
| Heat Treated Anodized Aluminum Casting       | Heavy-duty Polyester Powder Coating  |
| Fire Retardant Insulators                    | Accepts Conductors to 500MCM (250mm <sup>2</sup> ) and diameters up to 3.5" (90mm) |

## COUPLER DIMENSIONS & WEIGHTS

| Illustration (not to scale)       | Dimensions  | Weight             | Illustration (not to scale)         | Dimensions   | Weight             |
|-----------------------------------|---|--------------------|-------------------------------------|--|--------------------|
| <b>CABLE MOUNTED MALE</b><br>     | A 20 ¼"<br>514 mm<br>B 10 ½"<br>267 mm<br>C 24 ½"<br>622 mm                                   | 38.0 lb<br>17.0 kg | <b>CABLE MOUNTED FEMALE</b><br>     | A 24"<br>610 mm<br>B 11 ½"<br>292 mm<br>C 27"<br>686 mm  | 38.0 lb<br>17.0 kg |
| <b>EQUIPMENT MOUNTED MALE</b><br> | A 4 ¾"<br>121 mm<br>B 12 ¼"<br>311 mm<br>C 9"<br>229 mm<br>D 11"<br>279 mm<br>E 1 ½"<br>38 mm | 32.0 lb<br>14.5 kg | <b>EQUIPMENT MOUNTED FEMALE</b><br> | A 5 ¼"<br>133 mm<br>B 12 ¼"<br>311 mm<br>C 8 ¼"<br>210 mm<br>D 11"<br>279 mm<br>E 4"<br>102 mm | 27.0 lb<br>12.3 kg |



## CRUISE SHIP PART NUMBERS

| SHIP INLET   | SHIP CONNECTOR                             | PLUG                                      | SOCKET OUTLET                                       |
|--|--|---|---|
| <b>Power:</b>  | <b>Power:</b>                              | <b>Power:</b>                             | <b>Power:</b>                                       |
| <b>CEM150F1094</b><br>Microswitch, supplied with single phase cables | <b>CEM150F2017</b><br>Microswitch actuator | <b>CEM150F1199</b><br>No microswitch      | <b>CEM150F2198</b><br>No actuator                   |
| <b>CEM150F1165</b><br>Microswitch, no cable supplied                 |  |   |   |
| <b>Neutral:</b>  | <b>Neutral:</b>                            | <b>Neutral:</b>                           | <b>Neutral:</b>                                     |
| <b>CEM11S-001</b><br>Microswitch, supplied with single phase cable   | <b>CEM11S-002</b><br>Microswitch actuator  | <b>CEM11S-004</b><br>Microswitch actuator | <b>CEM11S-003</b><br>Microswitch, no cable supplied |
| <b>CEM11S-005</b><br>Microswitch, no cable supplied                  |  |   |   |

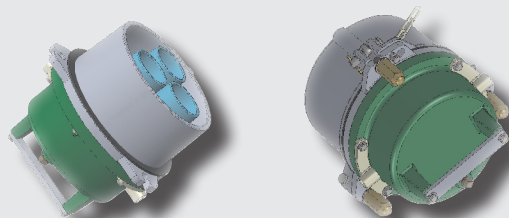
For shoreside coupler with microswitch requirement, contact factory.

## COUPLER OPTIONS

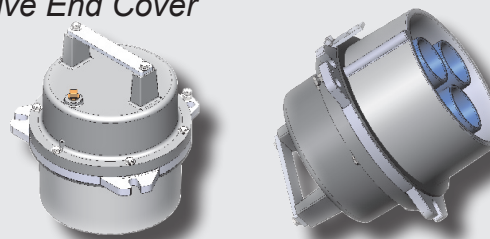
Shorting Caps are devices used to safely discharge capacitance that may be present in a high voltage cable after disconnection.

Live End Covers are insulated devices that allow energization of protected circuits not connected to loads.

*15 kV, 500 Amp  
Receptacle Shorting Cap*



*15 kV, 500 Amp  
Live End Cover*



## HOW TO ORDER

For a copy of our product catalogue, or for further information about our growing range of high voltage electrical equipment for the shorepower industry, call or email us

### **PATTON & COOKE CO.**

#100 - 7795 128th Street,  
Surrey, BC V3W 4E6  
CANADA

**PHONE:** 604.591.5374

**TOLL FREE:** 1.866.591.5374 (N. America)

**FAX:** 604.591.3505

**EMAIL:** [info@pattonandcooke.com](mailto:info@pattonandcooke.com)

**WEBSITE:** [www.pattonandcooke.com](http://www.pattonandcooke.com)