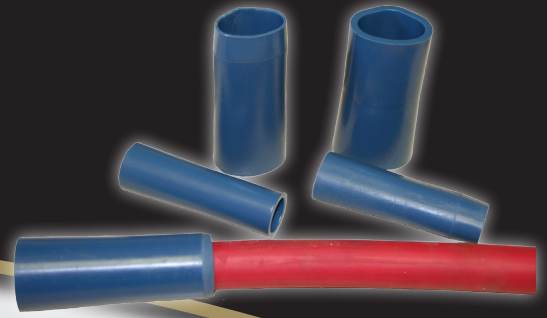




# PATTON & COOKE Insulated End Caps



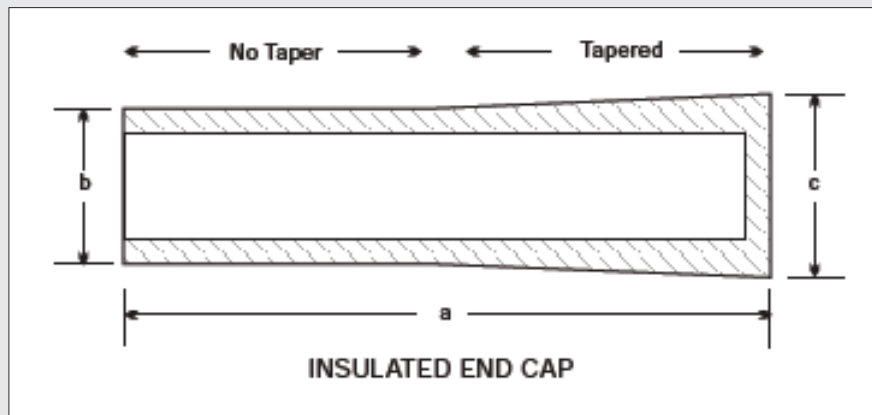
Insulated end caps are used for capping off live conductors. Cast from Patton & Cooke's exclusive thermal setting resin, insulated end caps are rigid cable handling tools with superior insulating properties.

Voltage Class (kV)	Cable Type	Conductor Size	Patton & Cooke Catalogue Number	Dimensions					
				a		b		c	
				(mm)	(in)	(mm)	(in)	(mm)	(in)
13	Compact Sector	#3/0 AWG	<b>CAP-015</b>	102	4.00	25	0.97	29	1.16
		300 MCM	<b>CAP-014</b>	110	4.31	32	1.25	36	1.41
		400 MCM	<b>CAP-006</b>	110	4.31	44	1.72	49	1.94
		500 MCM	<b>CAP-013</b>	110	4.31	35	1.38	39	1.54
		600 MCM	<b>CAP-005</b>	110	4.31	47	1.84	53	2.10
	Round	#2 AWG	<b>CAP-001</b>	102	4.00	25	0.97	29	1.16
15	Compact Sector	#2/0 AWG	<b>CAP-TH3</b>	110	4.31	35	1.25	40	1.41
		350 MCM	<b>CAP-012</b>	110	4.31	38	1.50	42	1.66
		500 MCM	<b>CAP-TH4</b>	110	4.31	49	1.84	53	2.10
	Round	#2/0 AWG	<b>CAP-TH1</b>	110	4.31	30	1.17	35	1.34
		350 MCM	<b>CAP-010</b>	110	4.31	32	1.25	36	1.41
		500 MCM	<b>CAP-011</b>	110	4.31	35	1.38	39	1.54
			<b>CAP-TH2</b>	110	4.31	49	1.57	44	1.73
25	Compact Sector	350 MCM	<b>CAP-005</b>	110	4.31	47	1.84	53	2.10
		500 MCM	<b>CAP-007</b>	110	4.31	52	2.06	58	2.28

### ORDERING PROCEDURE:

1. Determine the a: Voltage class b: Cable type and conductor size.
2. Select the catalogue number of the insulated end cap.

Example: 15 kV, compact sector, 350 MCM cable  
Catalogue number: **CAP-012**



*We make the connection.*

**High Voltage Equipment Solutions. Design and Manufacturing.**