



PATTON & COOKE

600 Series-Hydrophobic Insulators

15 kV to 25 kV

For use in outdoor medium voltage line pin insulator installations. Suitable where very heavy pollution rated insulators are required up to 15 kV or where heavy pollution rated insulators are required up to 25 kV.

DESIGN

EMC Pacific 600 Series moulded solid core HH-CEP* epoxy resin line insulator with a type A or C pin pattern (Australia) or ANSI 56 pin pattern (North America).

STANDARDS

EMC Pacific pin insulators are designed to meet or exceed the Polymeric Resin Insulator requirements of IEC & AS 62217 (2007) and the relevant performance requirements of AS IEC 60720 (2007), AS/NZS 2947.2 (2002) AS 4899 (2007), AS 4435.4 (2005), IEC 61952 (2008), ANSI C29.5 (1984) and CEA LWIWG-02.

QUALITY

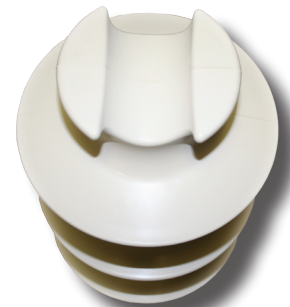
Each insulator is put through stringent quality assurance in line with the EMC Pacific ISO9001 Quality Management System, and every product is uniquely identifiable from a UNI (Unique Identification Number) located at the base.

ORDERING INSTRUCTIONS

Insulators are supplied with either type:

- ANSI 56.1" pin pattern (North America)

Please specify insert selection with order.



SPECIFICATIONS		
Product Number	PI 600 HH-CEP	
For Line Voltage	15/25	kV
Lightning Impulse Voltage	160(w)	kV
Dry Power Frequency Voltage	103(f)	kV
Wet Power Frequency Voltage	94(w)	kV
Dry Arc Distance	11.9	in
Creepage	23.6	in
Cantilever	2400	lbf
Minimum Tensile Failing Load	4500	lbf
Insulator Height	10.9	in
Maximum Shed Diameter	6.4	in
Weight	6.8	lbs

(f) denotes tested flashover value (w) denotes tested withstand value

*Hydrophobic Cycloaliphatic Epoxy Resin (patent applied)
Specification and product design are subject to change without notice.
All information is accurate at time of printing.

Manufactured in Australia by EMC Pacific Pty Ltd.

