



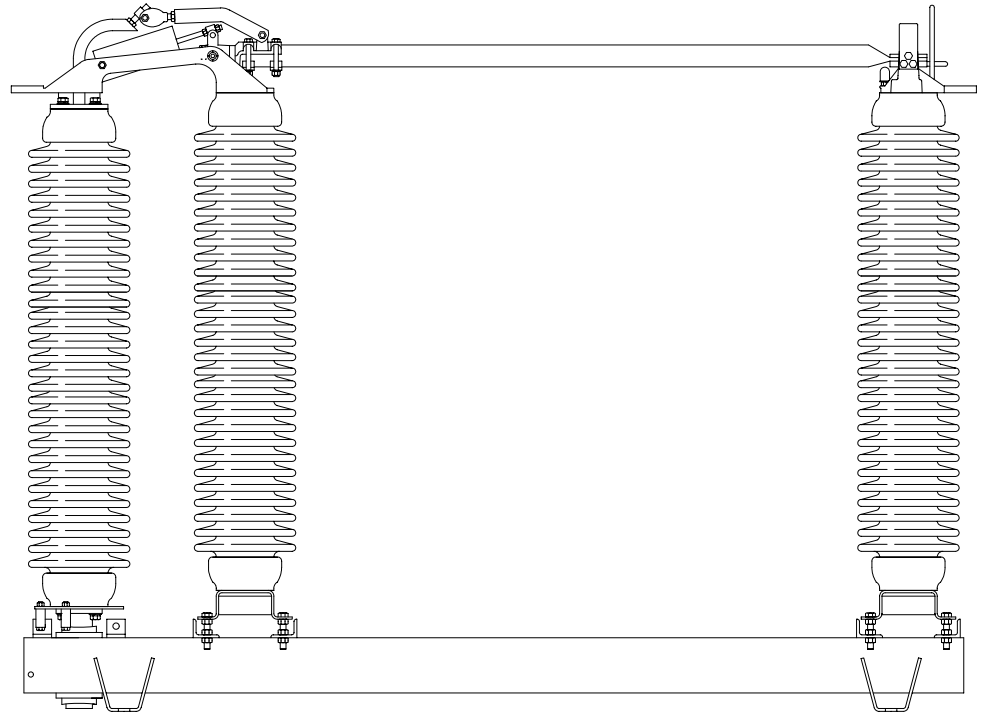
## Vertical Break Parallel Type VBP

### Aluminum or Copper

1200 & 1600 amp

### Pacific Air Break Switch Technology

**PASCOR** offers versatility and reliability in its entire line of group operated switches. Ideal for either substation or transmission applications, **PASCOR** switches are engineered to the highest standards to meet ANSI requirements. **PASCOR** customizes controls on each switch to suit the application.



### Vertical Break Parallel

- Manufactured in either aluminum or copper
- Permits minimum phase spacing
- Stable under heavy terminal pad loading
- Most versatile for interrupter accessories

### Application: Substation & Transmission

- Horizontal upright
- Vertical
- Underhung

### Standard Features

- Silver to silver exposed contacts
- Rigid tubular blade
- 1/2" Stainless Steel Arcing horn
- Stainless steel live parts hardware
- Galvanized steel square tube base
- Stainless steel ball bearings 115kV and up
- Stainless steel shaft in bronze sleeve bearing 69kV and below

### Operator Option

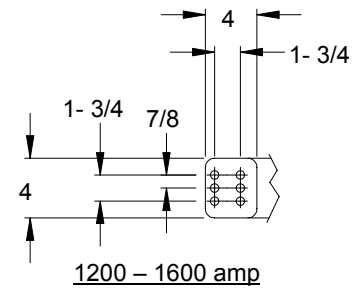
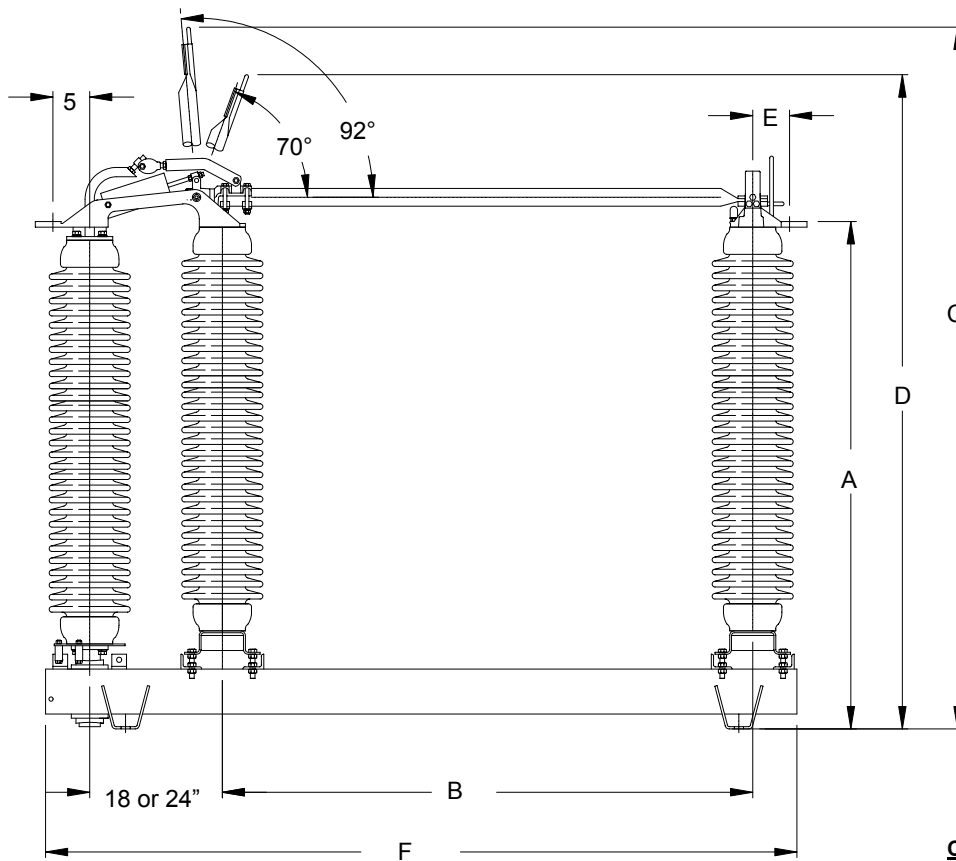
- Swing handle
- Worm gear
- Motor Operator

### Accessories

- Whip type horns
- Single or multi vacuum bottle Interrupters
- Ground switches

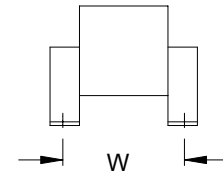
**VBPA** Vertical Break Parallel Aluminum

**VBPC** Vertical Break Parallel Copper



**TERMINAL PAD DETAILS**

ANSI Standard Hole Pattern  
9/16" diameter holes  
(center holes for 600A connector)



**BASE CROSS SECTION**

BASE TUBE CROSS SECTION	ANSI STANDARD MOUNTING "W"
15 – 69kV 4 x 4"	15 – 69kV 6 1/4"
115 – 230kV/900BIL 6 x 6"	115 – 161kV 8 1/4"
230kV/1050BIL 6 x 8"	230kV 12 1/2"

kV (nom)	kV BIL	Amps Continuous	kA Mom.	STD. INSUL.	INSUL. BC (IN)	INSUL. HGT (IN)	Dimensions are in inches						
							A	B	C	D	E	F	G*
15	110	1200/1600	61/70	TR205	3	10	20 1/4	15	46	44 1/2	5	42 1/2	679
23	150	1200/1600	61/70	TR208	3	14	24 1/4	18	53 1/4	51 1/2	5	45 1/2	707
34.5	200	1200/1600	61/70	TR210	3	18	28 1/4	24	63 1/4	61	5	51 1/2	882
46	250	1200/1600	61/70	TR214	3	22	32 1/4	30	73 1/4	70 3/4	5	57 1/2	1086
69	350	1200/1600	61/70	TR216	3	30	40 1/4	42	93 1/4	90	5	69 1/2	1386
115	550	1200/1600	61/70	TR286	5	45	59	60	130	125 1/2	5	90	2622
138	650	1200/1600	61/70	TR288	5	54	68	72	151	145 3/4	5	102	2877
161	750	1200/1600	61/70	TR291	5	62	76	84	172 1/2	166 1/2	5	114	3150
230	900	1200/1600	61/70	TR304	5	80	94	96	201 1/2	195	5	126	4479
230	1050	1200/1600	61/70	TR312	5	92	106	114	234	234	5	144	4514

\*Weights are in lbs., and include 3 phases, insulators and controls

**Pacific Air Switch Corporation**

P.O. Box 328 , 2615 23<sup>rd</sup> Avenue, Forest Grove, OR 97116, (503) 359-3939, Fax: (503) 357-0858