

THE "SAFE DISCONNECT" RAILROAD COUPLERS!



Locomotive-to-Locomotive or Car-to-Car Jumper equipped with Disconnect Handle shown coupled with **Plug**



Locomotive-to-Locomotive or Car-to-Car Jumper equipped with **Safety Decoupler**

Patton & Cooke is pleased to introduce a new family of couplers - **Railroad Couplers** for locomotives and rolling stock.

Since 1961, Patton & Cooke has been manufacturing trailing cable couplers for low, medium and high voltage applications. Now, this experience and technology has been used to develop a superior 27 pole coupler for use between locomotives and between locomotives and lead cars.

When developing this coupler, Patton & Cooke contacted railroad industry professionals to determine which features were important. This information was incorporated into the design of the Patton & Cooke Railroad Couplers. The result is a product that is compatible with industry standard equipment with all the unique safe disconnect features that the industry demands.

All Patton & Cooke products are supported by excellent customer service. A complete spare parts inventory is maintained to ensure prompt delivery of assembled units.

Unique Features

Couplers are epoxy coated blue as standard. Other colors are also available.

Couplers have 27 pole circuitry and are compatible with existing equipment

Jumper Assemblies can be equipped with a Disconnect Handle

Jumper assemblies are available with a Safety Decoupler

Benefits

- provides protection against contaminated operating environment and natural elements.
- enables color coding for easy identification.
- allows universal mating.
- eliminates expense associated with product conversions.
- allows easy decoupling preventing coupler contact damage.
- prevents coupler, contact and cable damage resulting when locomotive, rolling stock uncoupling occurs prior to unplugging jumpers.

THE DISCONNECT HANDLE



Plug and Jumper equipped with Disconnect Handle shown mated.



Disconnect Handle lifts to disengage couplers.



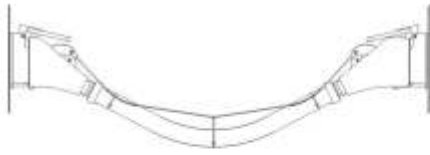
Effortless decoupling is complete.

Meeting your high voltage electrical equipment needs

PATTON & COOKE CO.

RAILROAD COUPLER

THE SAFETY DECOUPLER



Locomotive-to-locomotive jumper and receptacles shown installed.



As the distance between locomotives increases, the Safety Decoupler cable becomes taut. This pulls the Safety Decoupler levers up and begins to disengage the jumper and plugs.



The locomotives move even farther apart. The resulting tension affects only the Safety Decoupler, allowing a safe and complete decoupling of the couplers. All coupler components remain intact.

CATALOG NUMBERS

| Illustration (not to scale) | Description | Catalog Number | Dimensions | | | Weight | Pyle National Catalog Number |
|--------------------------------|--|-------------------|------------------|-------------------|-------------------|-------------------|---------------------------------|
| | | | Length | Width | Height | | |
| | Standard Car-to-Car Jumper | JT27-F x | 108 " 2743 mm | 5 1/4 " 133 mm | 12 " 305 mm | 16.0 lb 7.3 kg | WWPCJ-27xx |
| | Locomotive Jumper | JT27-F $x y$ | 108 " 2743 mm | 5 1/4 " 133 mm | 6 1/2 " 165 mm | 16.0 lb 7.3 kg | WWPCJ-27xx |
| | Car-to-Car Jumper equipped with Safety Decoupler | JT27C-F x | 108 " 2743 mm | 5 1/4 " 133 mm | 6 1/2 " 165 mm | 16.0 lb 7.3 kg | ----- |
| | Locomotive Jumper equipped with Safety Decoupler | JT27C-F $x y$ | 108 " 2743 mm | 5 1/4 " 133 mm | 6 1/2 " 165 mm | 16.0 lb 7.3 kg | ----- |
| | Car-to-Car Jumper equipped with Disconnect Handle | JT27H-F x | 108 " 2743 mm | 5 1/4 " 133 mm | 6 1/2 " 165 mm | 16.5 lb 7.5 kg | ----- |
| | Locomotive Jumper equipped with Disconnect Handle | JT27H-F $x y$ | 108 " 2743 mm | 5 1/4 " 133 mm | 6 1/2 " 165 mm | 16.5 lb 7.5 kg | ----- |
| | Receptacle | RT27F-M | 3 1/4 " 83 mm | 6 3/4 " 175 mm | 6 3/4 " 175 mm | 4.5 lb 2.0 kg | WWRF-27 |

SELECTION REMINDERS:

- Lengths shown are for the standard 108" jumper.
- All couplers are epoxy coated blue for extra protection. For other colors, contact factory.

ORDERING PROCEDURE:

- Car-to-Car Jumpers: Determine style of jumper required. Select catalog number. Determine the jumper length, in inches, required. Substitute the length for x to complete the catalog number.
- Locomotive Jumpers: Determine style of jumper required. Select catalog number. Determine the jumper length, in inches, required. Substitute the length for x in the catalog number. Determine the wiring circuitry required then contact factory to complete the catalog number.



PATTON & COOKE ALSO MANUFACTURES TRAILING CABLE COUPLERS AND CABLE ACCESSORIES FOR THE MINING INDUSTRY AND JUNCTION BARS, CABLE TRANSITION MODULES, CAPNUT TERMINATIONS AND CABLE ACCESSORIES FOR THE UTILITY INDUSTRY.

FOR FURTHER INFORMATION:

CANADIAN OFFICES

BRITISH COLUMBIA

Patton & Cooke Co.
7795 128th St.
Surrey BC
V3W 4E6
Tel: (604) 591-5374
Fax: (604) 591-3505
Email: info@pattonandcooke.com
Website: www.pattonandcooke.com

LOCALLY DISTRIBUTED BY:



Oct-00

