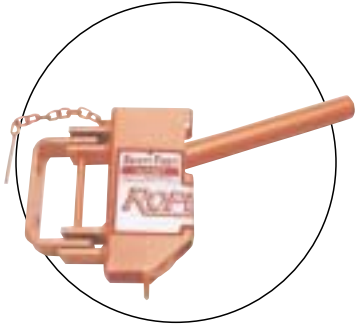


ROPE BRAKE

A safe innovative approach to your cable hoisting needs that is faster and safer than anything else on the market today.

FEATURES:

- Exclusive self-braking; provides maximum safety to personnel
- Heavy duty design meets rigid industry requirements
- Maintenance free
- Designed for ½" to 1" diameter synthetic rope
- Automatic braking with complete safety
- Ropebrake has been field proven in the worlds toughest open pit mine environments
- Ropebrake pivots 180° to give a directional pull when hoisting



CABLE BUN

Lightweight, easy handling, highly visible Cablebuns are proving to be the preferred choice in high voltage power cable suspension.

FEATURES:

- Controlled radius helps prevent high voltage power cable damage and breakage
- Carbide friction strip embedded into the inner radius of the body
- Specially designed sling used in a 'choker hold' position clinches the power cable and holds it in place
- Constructed from a hard wearing polyurethane, therefore impervious to most weather conditions



AVAILABLE:
Cable diameter range: 1.93" - 4.69"
(49.51mm - 1520mm)

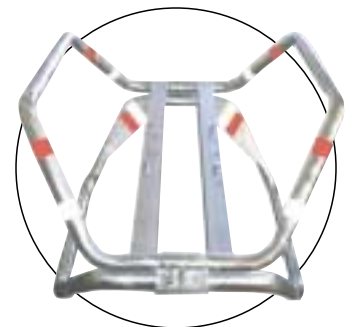
UNIVERSAL SKID

Heavy duty skid elevates and helps protect cable couplers

FEATURES:

- Frame constructed from heavy duty tubular steel
- Hot dipped galvanization applied to both internal and external surface for long lasting protection
- Heavy duty welded construction
- High visibility reflective markers for easy spotting in darkness or adverse weather conditions

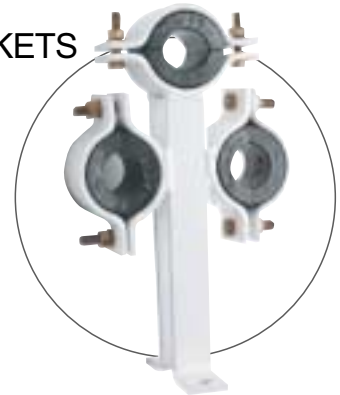
Dimensions: 57"(L) x 34"(H) x 40"(W)
Weight: 105 lbs. fully assembled



CABLE RISER BRACKETS

Patton & Cooke cable riser brackets attach insulated cable, conduit or piping to walls, roofs, and poles. The brackets keep the cable rigidly held in place.

Available in a variety of combinations and sizes; low and high profile mounting brackets for one or three cables.



J-HOOK CABLE HANDLING TOOL

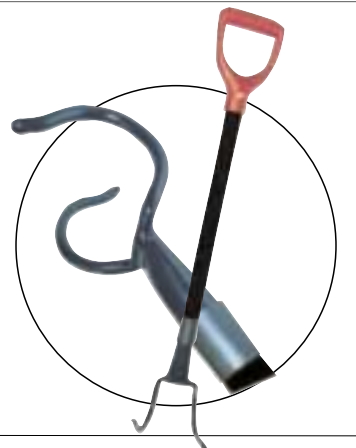
Introducing the new Patton and Cooke Cable Handling Tool. With an electrostatically applied powder coating and a PVC shaft with fiberglass back bone this tool is a handsome addition to any cable handlers arsenal. Highly resilient polyester powder coating ensures long lasting in extreme mining environments.

FEATURES

- Heat shrink cover
- Solid Fiberglass core
- 28 inch tool length
- Powder coated steel twist fork

BENEFITS

- Helps protect fiberglass core from bruises and abrasions
- High strength, light weight
Good electrical isolation with proper care and maintenance
- Optimal length to reduce operator back strain
- Corrosion resistant
- Fork curvature allows for easy cable pick up and retention



Patton & Cooke Mining Safety Products

Visit www.pattonandcooke.com
or contact your local representative for more details.

For more information:
Toll Free: 1.866.591.5374
Tel: 604.591.5374
Fax: 604.591.3505
promos@pattonandcooke.com



SPLIT STRAIN RELIEF ENTRANCE FITTING

The split strain relief entrance fitting is ideally suited for installations where trailing cable couplers are not being used, but where cables may be installed and removed frequently. The split design means that the entrance fitting can be installed or removed without disturbing the stress cones, sleeves or taping which makes up the cable termination. Cables can be installed and removed quickly. The strain relief entrance fitting is tightened to provide a positive clamp on the cable. No tools are required. Available in sizes which cover cable outside diameters from 2.76" to 3.50" (70 to 89 mm).



Outside Cable Diameter (mm)	(in)	Patton & Cooke Catalog Number
70 - 72	2.76 - 2.87	11W-040-D-U
73 - 76	2.88 - 3.00	11W-040-D-V
77 - 79	3.01 - 3.12	11W-040-D-W
80 - 82	3.13 - 3.25	11W-040-D-X
83 - 85	3.26 - 3.37	11W-040-D-Y
86 - 89	3.38 - 3.50	11W-040-D-Z

STRAIN RELIEF ENTRANCE FITTING

The strain relief entrance fitting combines a watertight seal with a positive clamping action around the cable. It is ideal for permanent entry of a cable into a mine power center, switchgear, disconnect switch or standard terminating box. These fittings are available in sizes from 0.82" to 3.5" (21 - 89 mm) outside diameter.

Note:
Clamp and seal kit specific to the cable outside diameter must be ordered separately.



CAM CLAMPS



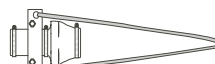
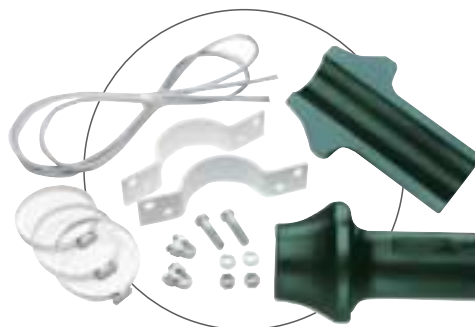
Our cast bronze alloy cam clamps are universally compatible with other manufacturer's products. The clamps are ideal for high voltage or unusual uses where cable couplers are not appropriate. There are two parts required to make a cam clamp assembly: the cam clamp bushing which is soldered to a portable cable conductor; and the cam clamp which is bolted to a bus bar or terminal pad. The cam clamp bushing is inserted and clamped into the cam clamp.

FEATURES

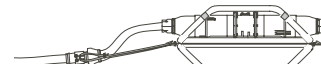
- hot stick operated cam lock
- stainless steel alloy lever eye
- bronze alloy castings for strength and electrical compatibility

Available with standard two-hole NEMA terminal pad drilling or custom-drilled to customer specifications

STRAIN RELIEF CLAMP SYSTEM



STRAIN RELIEF CLAMP



STRAIN RELIEF CLAMP SHOWN INSTALLED ON TRAILING CABLE

The strain relief clamp is designed to prevent cable jacket damage and to withstand the tough use typical in mining, construction and utility applications.

- Eliminates strain on the cable connections at the coupler/enclosure interface on electric shovels, drills, LHD's, jumbos, junction boxes or cable supports.
- Supports a cable in vertical shaft and pole suspension applications.
- Corrosion resistant with galvanized hardware and wire rope
- The strain relief clamp covers a cable diameter range of 0.625"-3.625" (16-92 mm). Larger sizes are available on request.

SPLITTER BOXES



Patton & Cooke has been designing and manufacturing splitter boxes since 1961. Our experience combined with customers' specific needs result in a range of splitter boxes which will satisfy most applications.

FEATURES

- Splitter boxes are enclosures containing insulators, bus and terminating facilities to provide a convenient method of interconnecting three or more cables.
- Available in free standing, wall, skid or trailer mounted styles. They are available in voltages from 600V through 25 kV with current ratings to 500 Amps.
- We can custom design splitter boxes to meet customer's specific needs.

Patton & Cooke Mining Safety Products

Visit www.pattonandcooke.com or contact your local representative for more details.

For more information:
Toll Free: 1.866.591.5374
Tel: 604.591.5374
Fax: 604.5913505
promos@pattonandcooke.com

