



PATTON & COOKE CO.

600 VOLT QUICK FLIP CABLE COUPLERS



Blast Hole Driller



Roof Bolter



Continuous Miner



Longwall Miner



Pump

Meeting your high
voltage electrical
equipment needs

Don't Take Chances ... Make the Field Proven Choice!

When it comes to the potentially hazardous conditions encountered in the mining and utility industries, the reliability of high voltage electrical equipment is critical.

With Patton & Cooke's "quick flip" 600V 250 Amp cable coupler, your worries are over. This rugged and dependable coupler has proven its reliability in some of the most demanding field conditions in the world. This includes North & South American, Europe, the People's Republic of China, India, Australia and the Philippines.

The coupler features our exclusive quick flip coupling method for fast and easy coupling and uncoupling. It also provides positive coupling and tight-fitting covers to repel water and dirt and keep electrical contacts clean. In addition to these advantages, this superbly designed 600 Volt coupler offers a wide range of important features and benefits including:

Enhanced safety

- fire retardant insulators
- ground check (pilot) system protection
- optional epoxy color coating

Easy, low cost maintenance

- front end removable contacts
- choice of solder type or solderless conductor stems
- commonality of parts with other Patton & Cooke couplers
- in-field serviceability

Fast, inexpensive installation

- self-aligning housings
- gasketing to customer cable diameter
- one person operation
- versatile mounting

Reliability and long life

- sturdy, corrosion resistant, cast aluminum body
- quality designed and built in North America
- proven performance record, worldwide



600 V, 250 Amp cable mount coupler
with protective cover (included)

Don't take chances with your electrical equipment. Choose the proven performer ... Patton & Cooke's 600 Volt, 250 Amp "quick flip" cable coupler.



Front view of C06
cable mount couplers



Live parts for C06
Series Couplers



Equipment mount
receptacles on
portable power
center

How to order

The standard contact arrangement for the 600 V coupler includes three insulated phase contacts, one ground contact, and one isolated ground check (pilot contact).

When ordering the Patton & Cooke 600 V coupler, please specify our catalog numbers and your cable type, size and diameter.

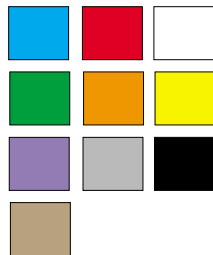
Part Numbers (see catalog pages for full descriptions)

Description	Catalog No
Plug 600 V 250 Amp Cable Mount	C06C1005
Plug 600 V 250 Amp Equipment Mount	C06C1006
Receptacle 600 V 250 Amp Cable Mount	C06C2005
Receptacle 600 V 250 Amp Equipment Mount	C06C2006

Description	Catalog No
Junction Box 600V 250 Amp c/w Receptacles (for mating cables with male ends)	C06C3006
Skid Mounted Junction Box 600V 250 Amp c/w Receptacles (for mating cables with male ends)	C06C3007

Other options

- ▶ Powder coating
Available colors:
red, blue, white
orange, yellow,
green, purple,
grey, black, brown



- ▶ Solderless stems
- ▶ Mounting legs
- ▶ Live end cover equipped
- ▶ Additional contacts
- ▶ Submersible kit
- ▶ Closing tool



600 V Skid mount junction box
(shown with male plugs attached)



600 V cable mount plug
with panel-mount receptacle



600 V cable couplers
with cover / hood

Patton & Cooke also manufactures 600/1100 V, 5 & 8 kV, 15 kV and 25 kV cable couplers, ground fault products and a complete line of cable handling accessories.

FOR FURTHER INFORMATION:



Est. 1961

Patton & Cooke Co.
7795-128th St.
Surrey BC
V3W 4E6
Tel: (604) 591-5374
Fax: (604) 591-3505
E-mail: info@pattonandcooke.com
Website: www.pattonandcooke.com

LOCALLY DISTRIBUTED BY:



"Proudly
made by
Canadian
Labour"